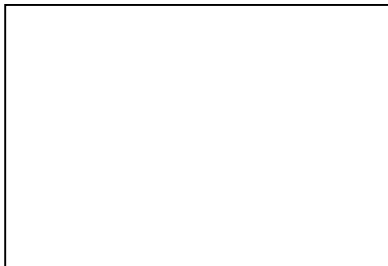


**2-6: The Graphs of  $y = \frac{k}{x}$  and  $y = \frac{k}{x^2}$**

*In-Class Activity*

1. a.



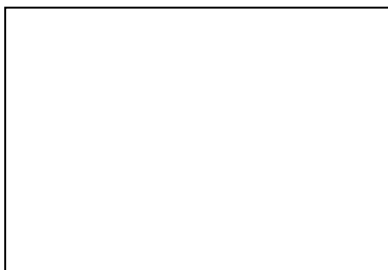
b.

c.

d.

e.

2. a.



b.

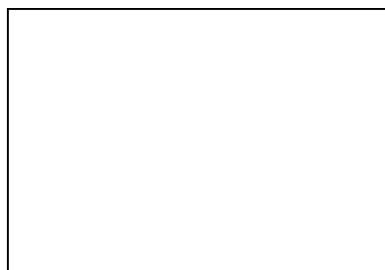
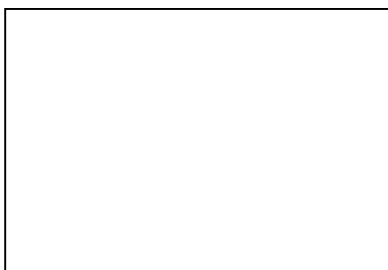
c.

d.

e.

3.a.

b.



*The Graph of  $y = \frac{k}{x}$ :*

*Branches:*

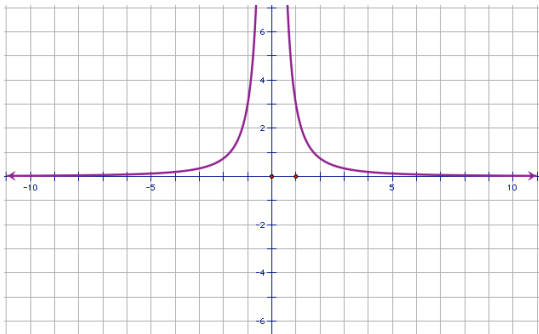
*Discrete Graph:*

*The Graph of  $y = \frac{k}{x^2}$ :*

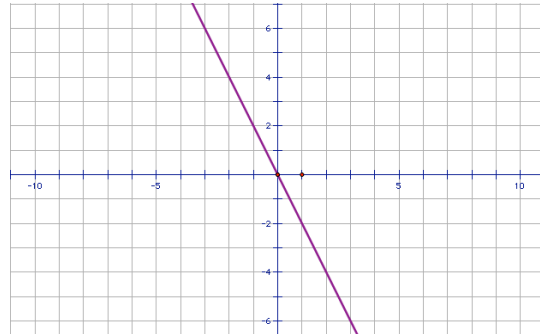
*Asymptote:*

*Example 1:* Identify each type of graph and describe the characteristics.

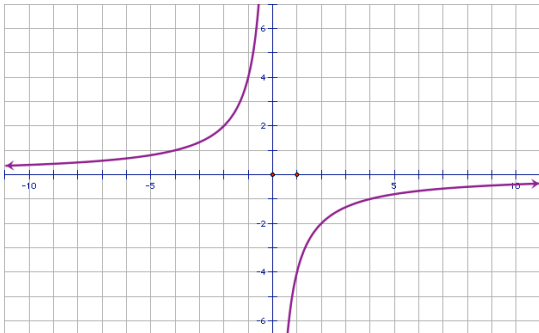
a.



b.



c.



*Homework:*

"Doubt whom you will, but never yourself." - Christine Bovee